

Encoder Pro Info

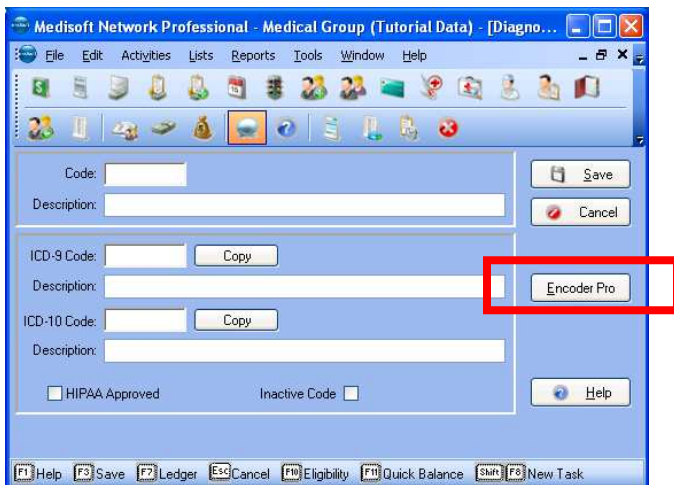
For more information;
While in Encoder Pro press the **F1** Key (or click on Help)

If you have purchased and registered Encoder Pro, an Encoder Pro button appears in the Diagnosis and Procedure/Payment/Adjustment windows when you do the below.

To Access Encoder Pro: While in either the Procedure Code or Diagnosis Code

Either Edit a code or Click on New

Then the Encoder Pro Button appears. Click on the Encoder Pro Button

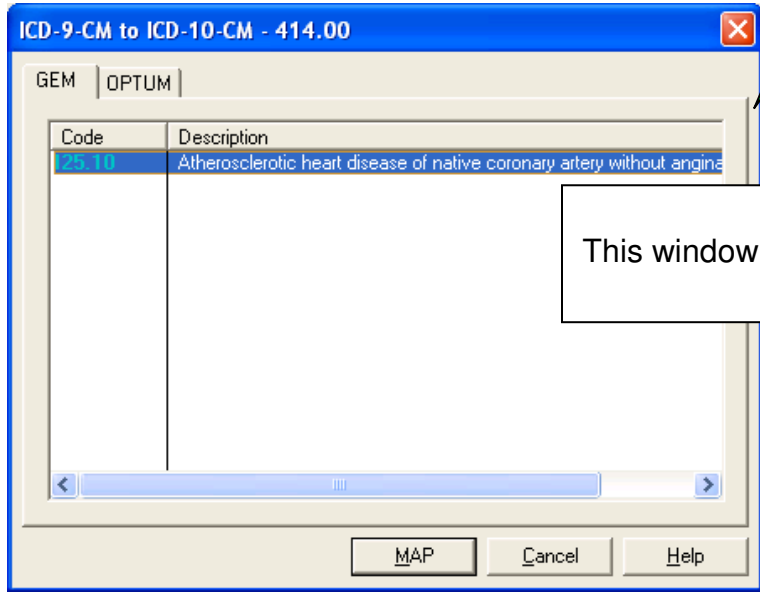
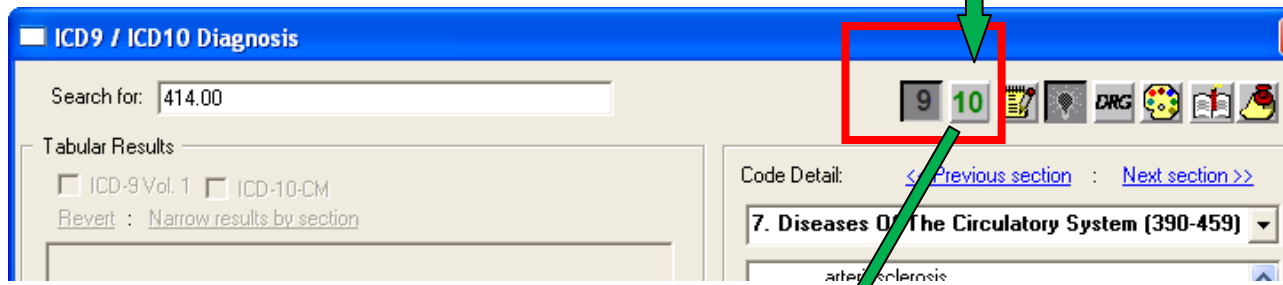


A screenshot of the "ICD9 / ICD10 Diagnosis" window. The search field at the top left contains the text "414.0" and is highlighted with a red box. Below the search field, there is a list of search results. The result "414.0 Coronary atherosclerosis" is highlighted in blue. To the right of the search results, there is a "Code Detail" section showing the details for "414.0 Coronary atherosclerosis". At the bottom of the window, the "OK" button is highlighted with a red box. There are several annotations: a green arrow points from the search field to the search results; a text box on the left explains the search process: "Enter in a code or description Press the Enter Key. You can choose an item on the right or scroll up/down to find the code that you want."; another text box on the right explains the next step: "After choosing the code Click on OK, This will add the code to your existing Codes." The status bar at the bottom shows "Fifth Digit Code Required".

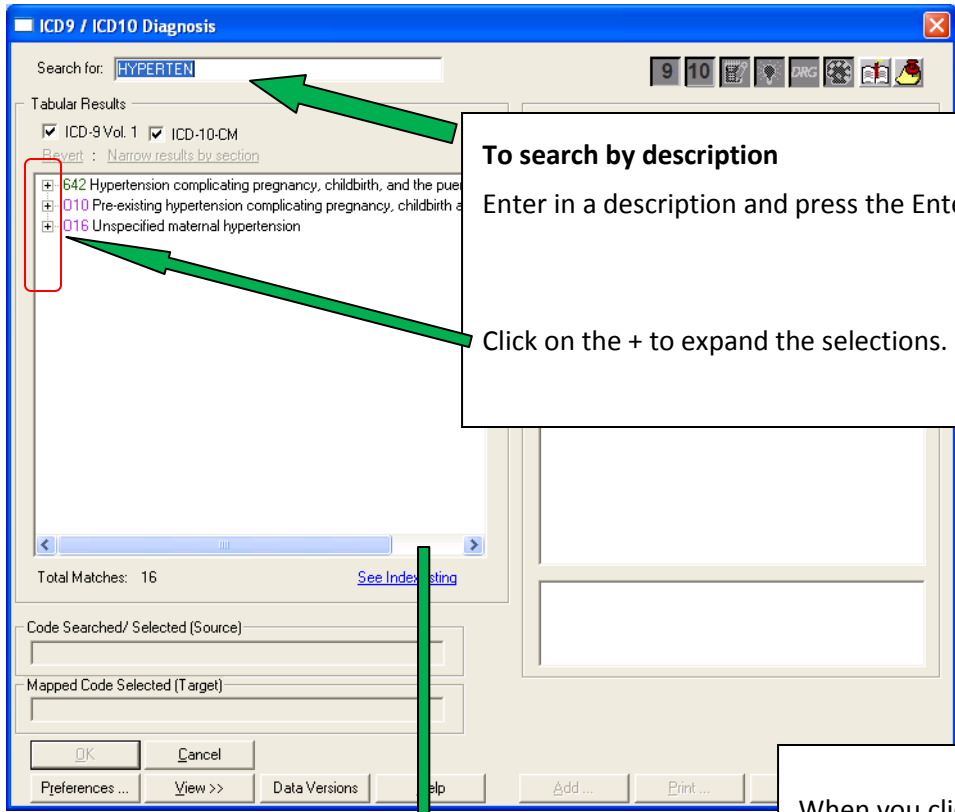
Note, for the Diagnosis Code, when there is an ICD10 code this button will show.



You can click on the 10 button for more information.

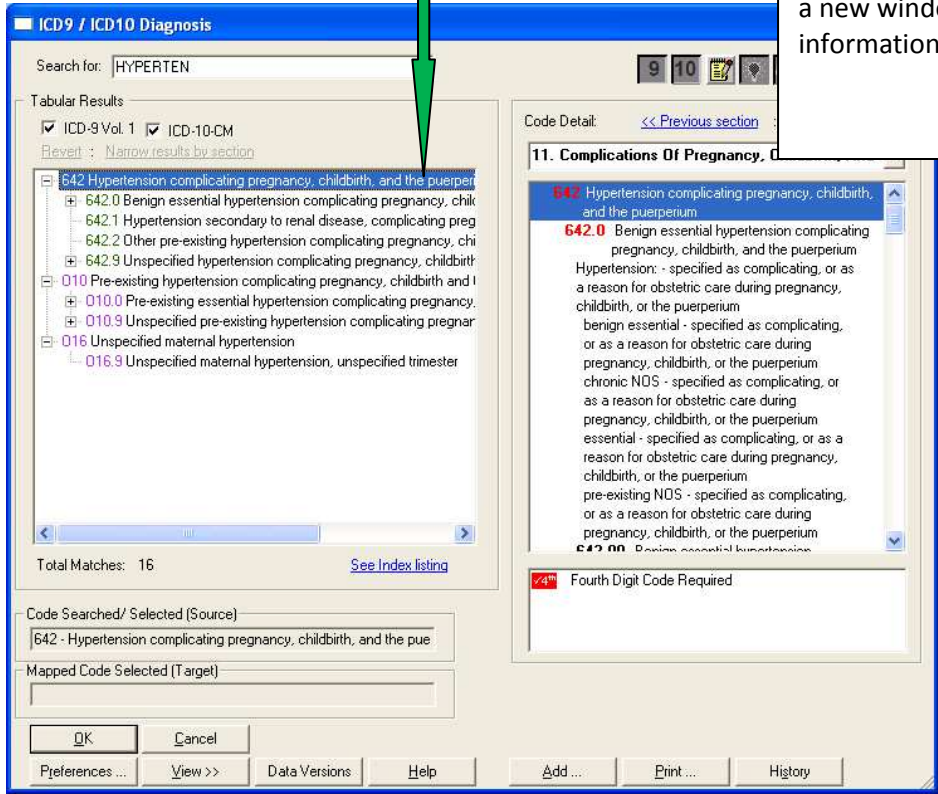


This window will open.



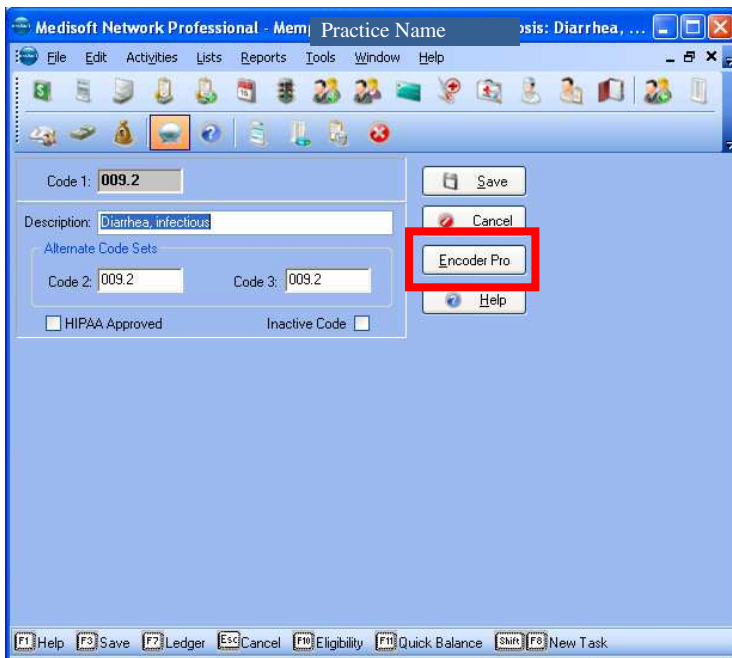
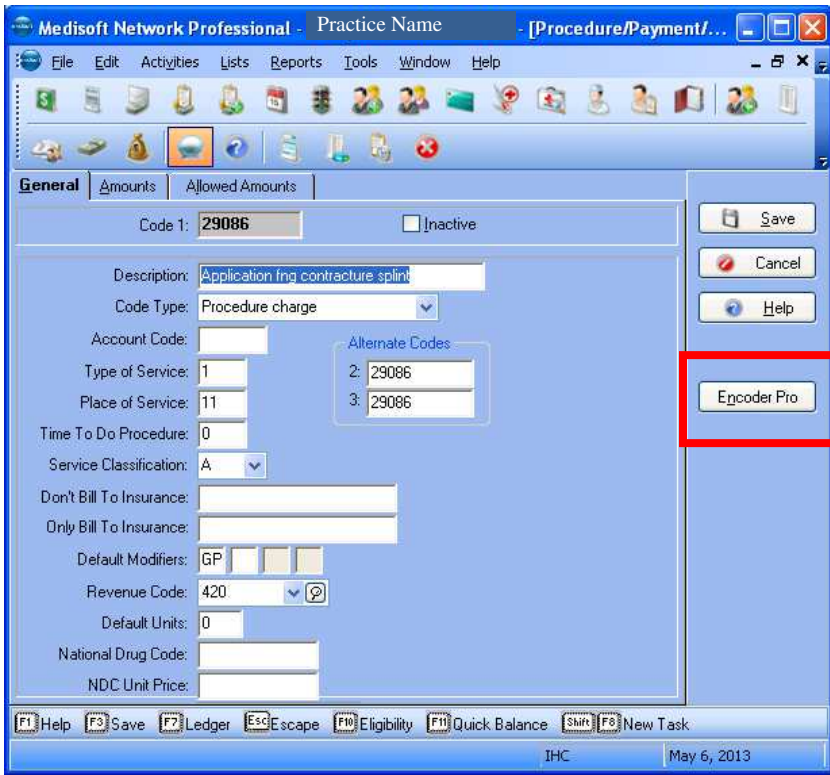
To search by description
Enter in a description and press the Enter Key.
Click on the + to expand the selections.

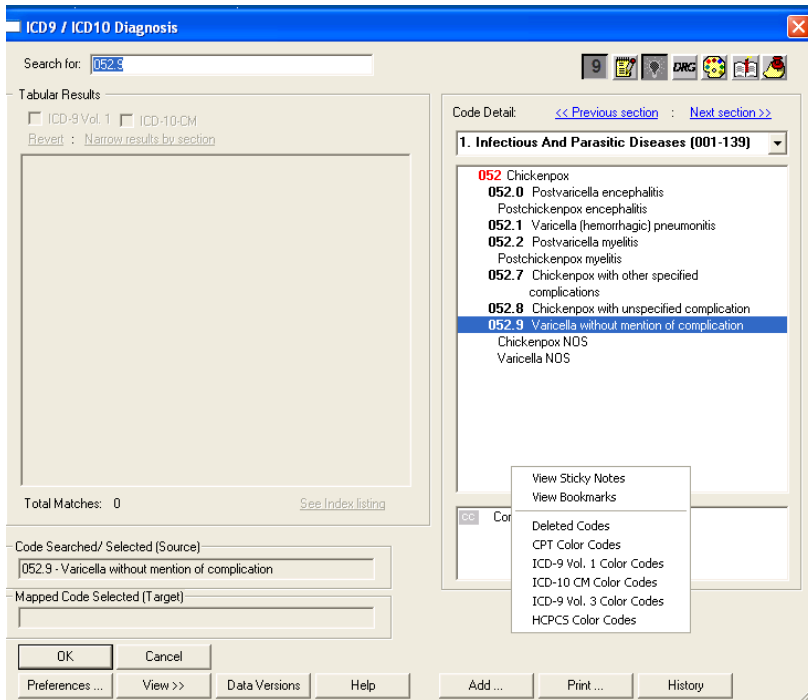
When you click on one of the items, a new window will open with more information on the right side.



More Screen Print Samples are below:

Edit a CPT or DX Code:





Right Click

