

Encoder Pro Info

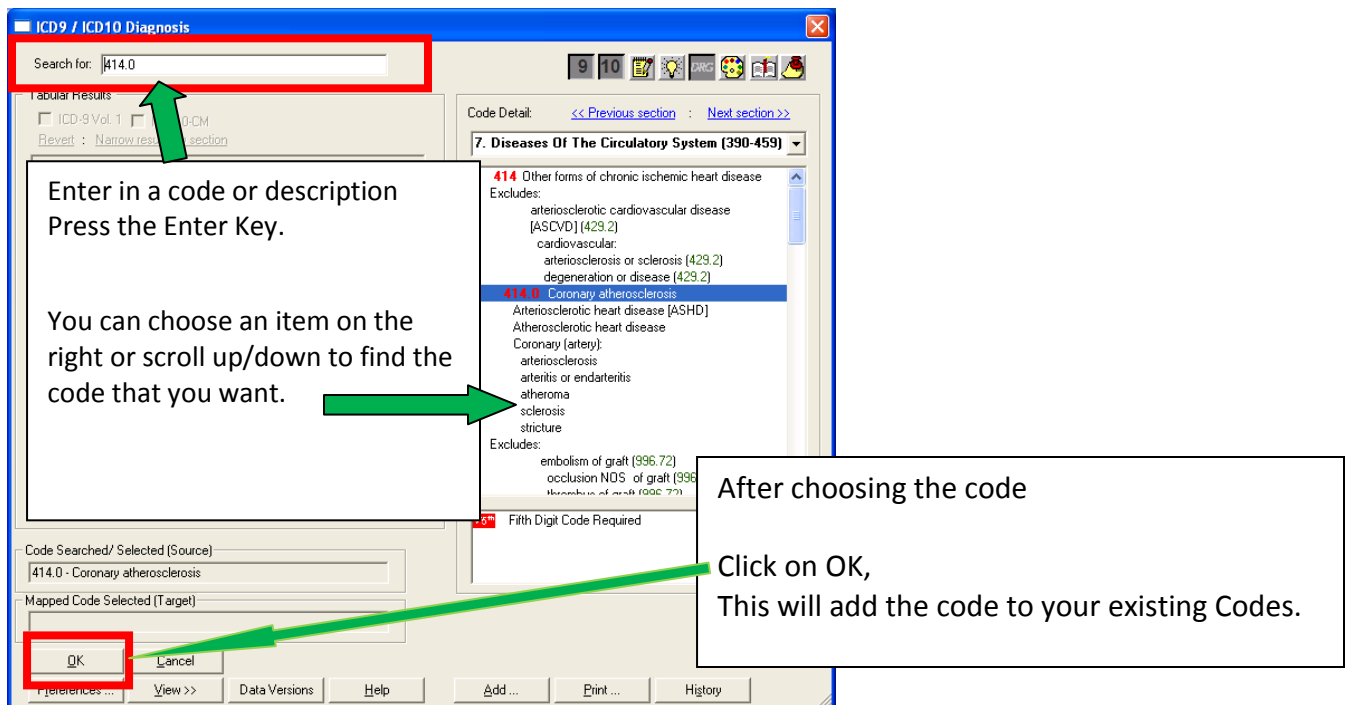
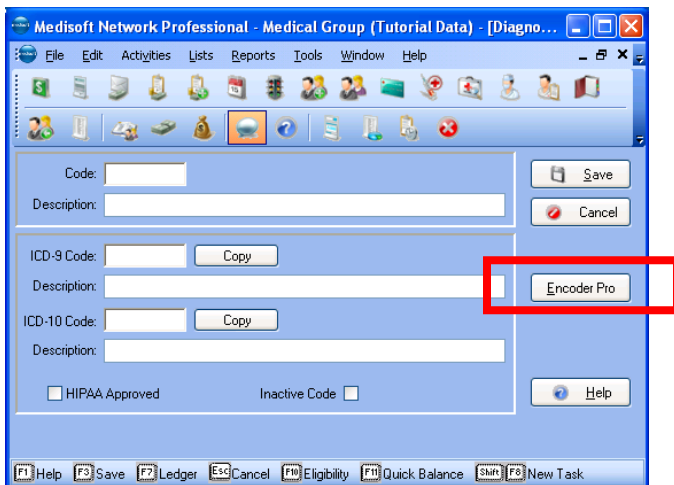
For more information;
While in Encoder Pro press the **F1** Key (or click on Help)

If you have purchased and registered Encoder Pro, an Encoder Pro button appears in the Diagnosis and Procedure/Payment/Adjustment windows when you do the below.

To Access Encoder Pro: While in either the Procedure Code or Diagnosis Code

Either Edit a code or Click on New

Then the Encoder Pro Button appears. Click on the Encoder Pro Button



Enter in a code or description
Press the Enter Key.

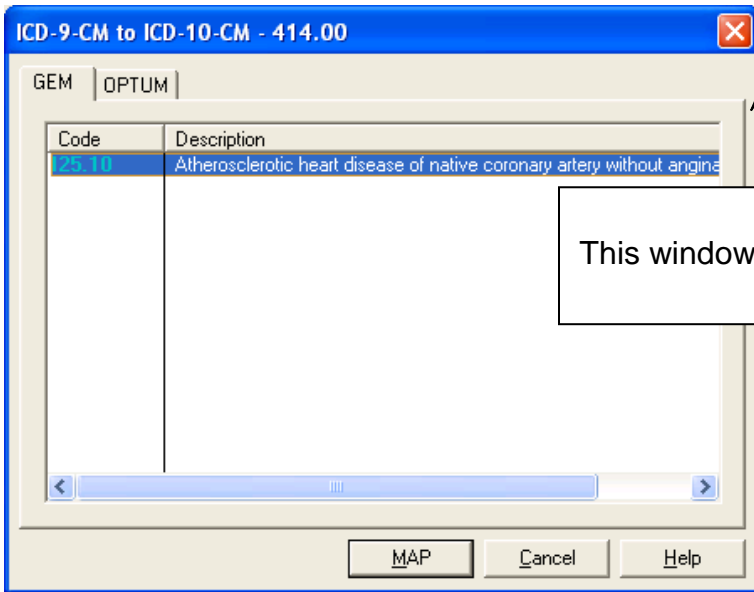
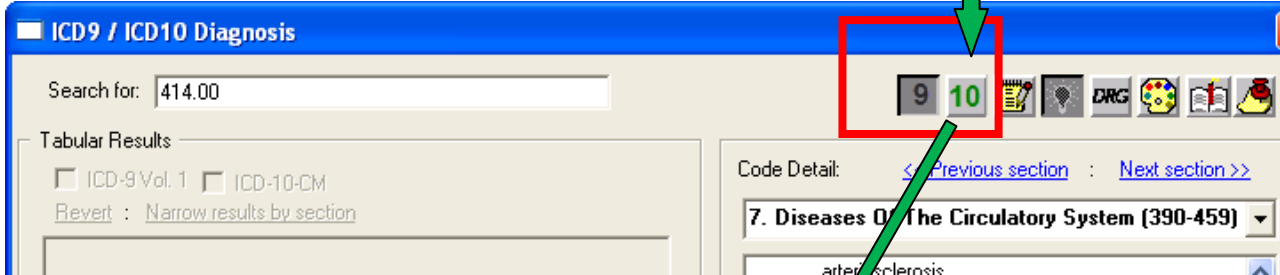
You can choose an item on the
right or scroll up/down to find the
code that you want.

After choosing the code
Click on OK,
This will add the code to your existing Codes.

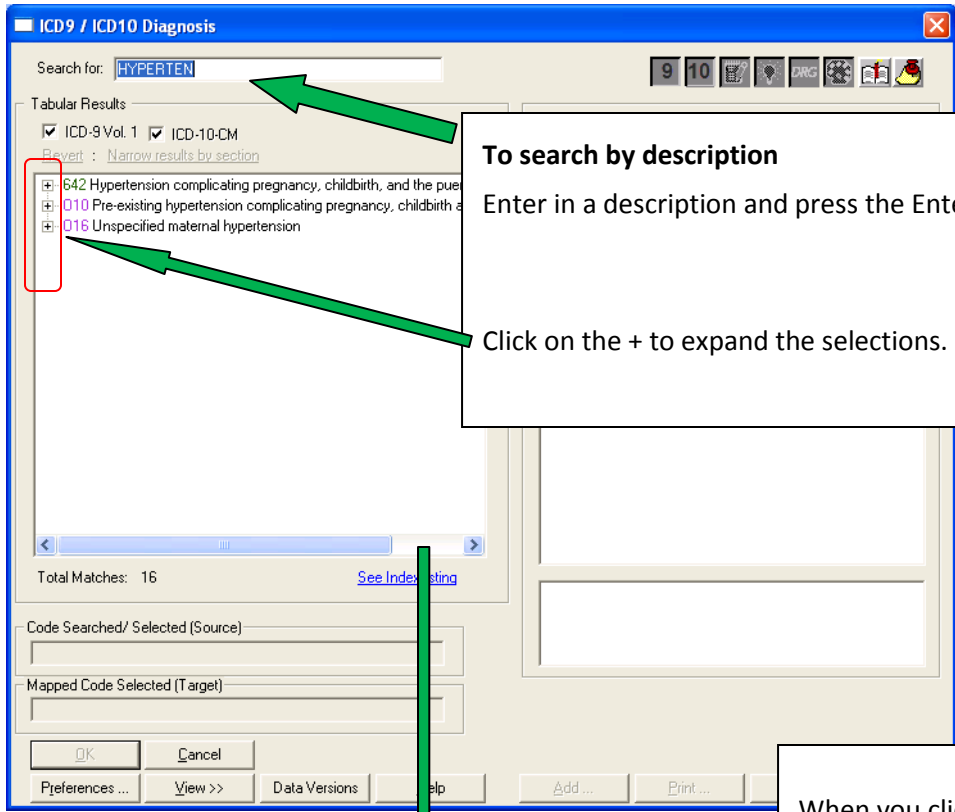
Note, for the Diagnosis Code, when there is an ICD10 code this button will show.



You can click on the **10** button for more information.



This window will open.

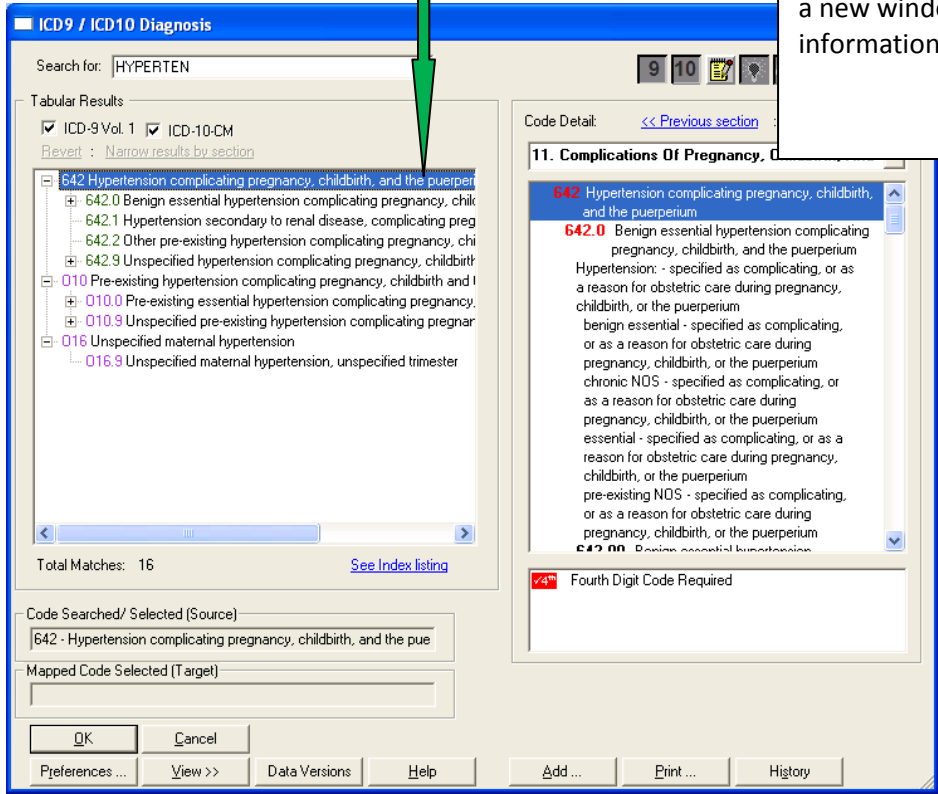


To search by description

Enter in a description and press the Enter Key.

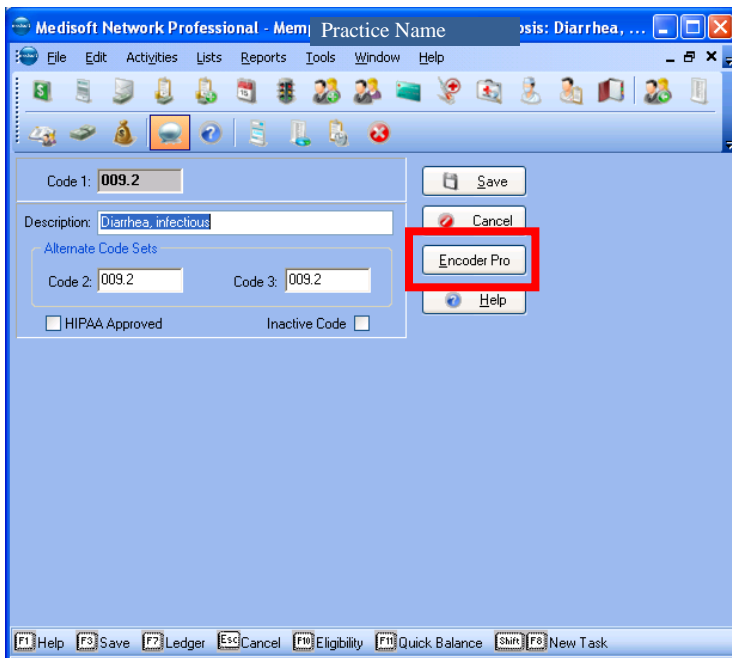
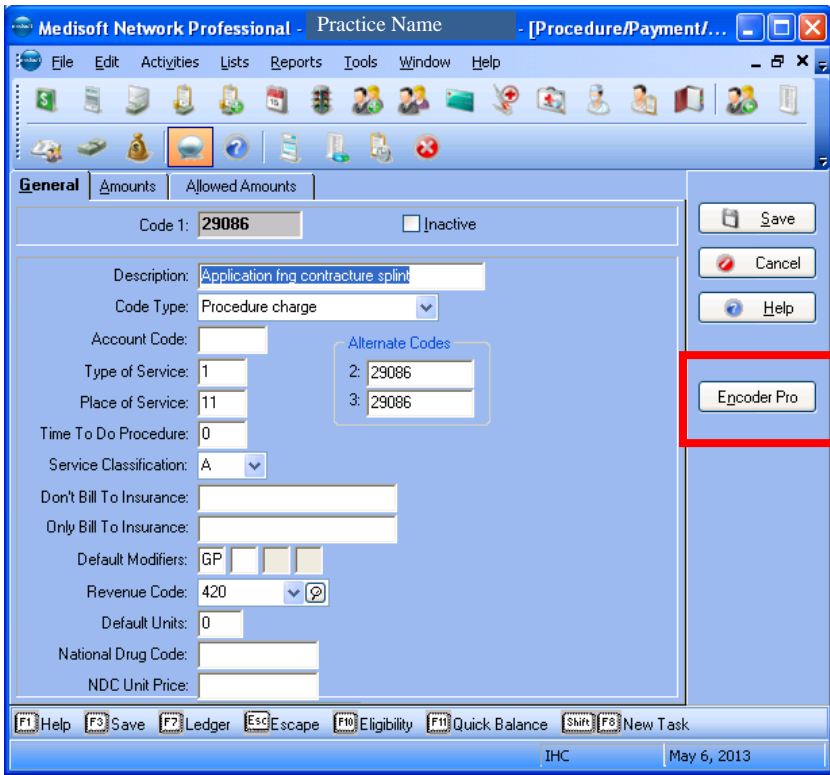
Click on the + to expand the selections.

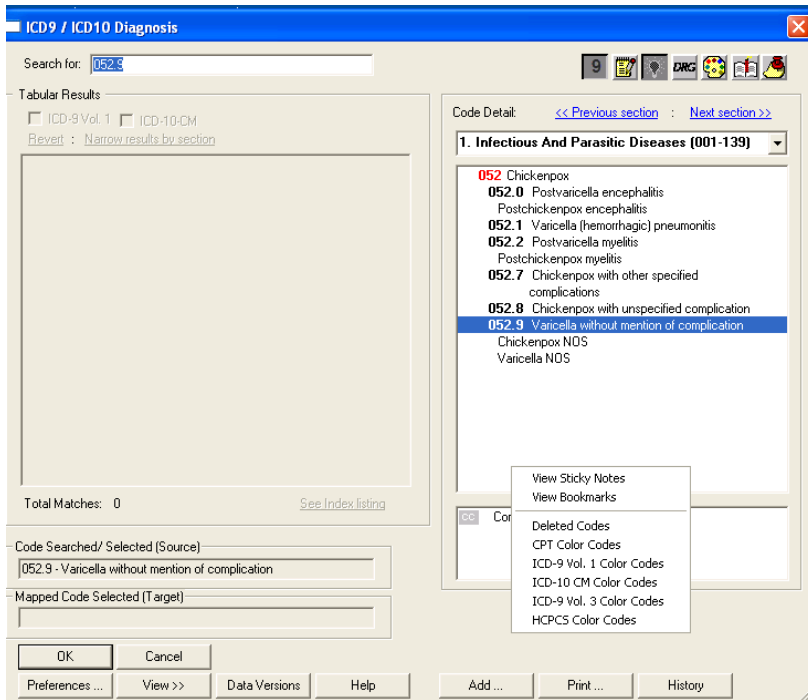
When you click on one of the items, a new window will open with more information on the right side.



More Screen Print Samples are below:

Edit a CPT or DX Code:





Right Click

